

Laptop Risers

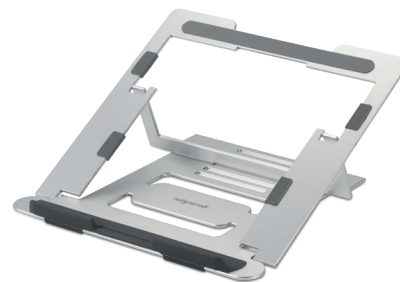
Create a more ergonomic and comfortable workspace by elevating your laptop screen to eye level, reducing neck and back strain.



NEW

50% POST-CONSUMER RECYCLED PLASTIC • CONTAINS RECYCLED CONTENT

EQ



SMARTFIT™ EASY RISER™ EQ LAPTOP COOLING STAND

- The plastic in this product contains at least 50% post-consumer recycled (PCR) content
- SmartFit™ System simplifies ideal ergonomic height positioning
- Dissipates heat build-up to extend the longevity of laptop battery
- Up to 50° tilt angle, fits laptops 12-17" screen size

Black

K52805EU

EASY RISER™ ALUMINIUM LAPTOP RISER

- Made from solid, recyclable aluminium
- Lightweight portable design ideal for the hybrid worker
- 6 levels of height (86-118mm) and angle (22-33°) adjustment for optimal viewing
- Open design for increased air circulation and heat dissipation
- Supports laptops up to 16" screen size, 5kg max. weight

K50417WW



SMARTFIT™ EASY RISER™ GO LAPTOP COOLING STAND

- SmartFit™ System simplifies ideal ergonomic height positioning
- Dissipates heat build-up to extend the longevity of device battery
- Small desktop footprint and folds flat for easy portability
- Use with an external keyboard and mouse (sold separately)

Up to 17"

K50420EU

Up to 14"

K50421EU

UNIVERSAL TABLETOP LAPTOP RISER

- Manufactured from strong steel and aluminium
- Sleek ergonomic design for comfortable tabletop viewing
- Height (151-200mm) and angle (0-45°) adjustment for optimal viewing
- Open design for increased air circulation and heat dissipation
- Anti-silicone pads prevent scratches and keep laptop in place
- Supports laptops up to 16" screen size, 8kg max. weight

K50424WW

 post-consumer recycled

EQ Mice

Our new range of wireless and wired mice utilise post-consumer recycled material, helping to reduce the impact of plastic on the global environment.



PRO FIT™ ERGO MY630 EQ RECHARGEABLE MOUSE

- Includes 55% post-consumer recycled (PCR) content of total plastic components*
- USB-C® rechargeable 500mAh battery
- 6-button design with silent click, high-grip surface and metal scroll wheel
- Buttons can be customised through free KensingtonWorks™ software
- 2.4GHz, Bluetooth 3.0 and 5.0 wireless connectivity options
- Windows and macOS compatible

* Excludes PCB assembly, rechargeable battery and charging cable

K72482WW



MY430 EQ RECHARGEABLE MOUSE

- The plastic in this product contains at least 50% post-consumer recycled (PCR) content*
- USB-C® rechargeable 500mAh battery
- 6-button design with silent click
- Buttons can be customised through free KensingtonWorks™ software
- 2.4GHz, Bluetooth 3.0 and 5.0 wireless connectivity options
- Windows and macOS compatible

* Excludes PCB assembly

K75507EU



MY310 EQ WIRELESS MID-SIZE MOUSE

- The plastic in this product contains at least 49% post-consumer recycled (PCR) content*
- Soft rubber panels for comfort and grip
- Clickable scroll wheel
- High definition optical sensor (800/1200/1600DPI)
- Secure 2.4GHz wireless connectivity
- Up to 12 months battery life (2 x AAA batteries included)
- Windows and macOS compatible

* Excludes PCB assembly

K72481WW



MOUSE-IN-A-BOX® EQ WIRED MOUSE

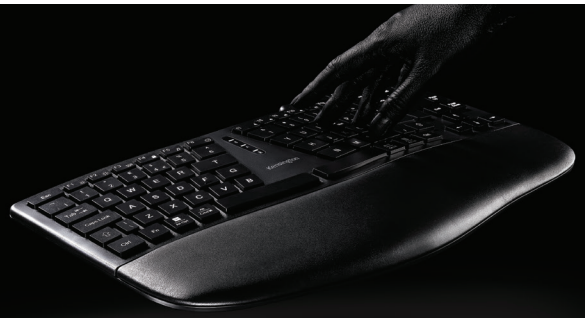
- The plastic in this product contains at least 44% post-consumer recycled (PCR) content*
- Scroll wheel ideal for speeding through documents
- Comfortable and contoured ambidextrous design with 1000DPI optical sensor
- Wired 1.8m USB-A cable
- Windows and macOS compatible

* Excludes PCB assembly and cables

K72480WW

EQ Keyboards

Our new range of wireless and wired keyboards utilise post-consumer recycled material, helping to reduce the impact of plastic on the global environment.



PRO FIT™ ERGO KB675 EQ TKL RECHARGEABLE KEYBOARD

- The plastic in this product contains 43% post-consumer recycled (PCR) content*
- USB-C® rechargeable 500mAh battery
- Curved design with 4° angle and integrated wrist rest for natural typing position
- Ten-keyless (TKL) 93 key layout with virtual meeting and emoji keys
- 2.4GHz and Bluetooth wireless connectivity
- Windows and macOS compatible

* Excludes PCB assembly, rechargeable battery, 2.4GHz dongle and charging cable

K75491UK



KB150 EQ WIRELESS KEYBOARD

- The plastic in this product contains at least 45% post-consumer recycled (PCR) content*
- Full-size 105 key layout
- 2.4GHz wireless connectivity
- Sealed membrane allows accidental spills to run through without damaging keyboard electronics
- Includes 1 x AA battery
- Windows and macOS compatible

* Excludes printed circuit board (PCB) assembly, 2.4GHz dongle and dry batteries

K75561UK



KB100 EQ WIRED KEYBOARD

- The plastic in this product contains at least 50% post-consumer recycled (PCR) content*
- Reliable Plug & Play operation with 1.5m wired USB connection
- Sealed membrane allows accidental spills to run through without damaging keyboard electronics
- Meets MIL-STD-810H Method 504.3 Contamination by Fluids testing
- Windows and macOS compatible

* Excludes PCB assembly and cables

K63727UK



KM150 EQ WIRELESS KEYBOARD AND MOUSE SET

- The plastic in this keyboard and mouse contains at least 53% post-consumer recycled (PCR) content*
- Full-size 105 key keyboard with 3-button mouse set
- 2.4GHz wireless connectivity, 10m range
- Sealed membrane allows accidental spills to run through without damaging keyboard electronics
- Includes 1 x AA (keyboard) and 2 x AAA (mouse) batteries
- Windows and macOS compatible

* Excludes top cover of mouse, printed circuit board (PCB) assembly, 2.4GHz dongle and dry batteries

K75562UK



KM100 EQ WIRED KEYBOARD AND MOUSE SET

- The plastic in this keyboard and mouse contains at least 49% post-consumer recycled content (PCR)*
- Reliable wired USB-A connections
- Sealed membrane allows accidental spills to run through without damaging keyboard electronics
- Meets MIL-STD-810H Method 504.3 Contamination by Fluids testing
- Tactile feedback keys for exceptional comfort
- Windows and macOS compatible

* Excludes PCB assembly and cables

K75452UK

 post-consumer recycled

EQ Trackballs

Our TB550 and TB450 EQ Ergo Trackballs utilise post-consumer recycled material, helping to reduce the impact of plastic on the global environment.



PRO FIT™ ERGO TB550 EQ TRACKBALL

- Includes 51% post-consumer recycled (PCR) content of total plastic components*
- Sculpted ergonomic design and unique 45° tilt improves wrist and forearm alignment
- Bluetooth® LE and 2.4GHz wireless connectivity
- Rechargeable battery with 4-month battery life
- Patented ball ejection system for cleaning
- 4D scroll wheel supports both vertical and horizontal scrolling
- Can be customised using free KensingtonWorks™ software
- 128-bit AES encryption

* Excludes PCB assembly, rechargeable battery and charging cable

K72196WW



PRO FIT™ ERGO TB450 EQ TRACKBALL

- Includes 50% post-consumer recycled (PCR) content of total plastic components*
- Sculpted ergonomic design and unique 45° tilt improves wrist and forearm alignment
- Bluetooth® LE and 2.4GHz wireless connectivity
- 18-month (2.4GHz) or 15-month (Bluetooth) battery life
- Patented ball ejection system for cleaning
- Can be customised using free KensingtonWorks™ software
- 128-bit AES encryption

* Excludes PCB assembly and dry battery

K72194WW



SLIMBLADE™ PRO WIRELESS TRACKBALL

- Low-profile, ambidextrous design delivers all-day comfort
- Bluetooth®, 2.4GHz wireless and wired connection options
- Rechargeable battery with 4-month battery life
- Twist scrolling for quick and precise movement
- Large 55mm trackball with switchable optical tracking (400-1600DPI)
- 8 sets of programmable buttons can be customised using free KensingtonWorks™ software
- 128-bit AES encryption

K72080WW

 made with plastic bottles

EQ Bags & Sleeves

Our new range of EQ bags and sleeves are made using recycled water bottles, helping to protect both your devices and the environment.



EQ LAPTOP BACKPACKS

- At least 14.5 x 250ml plastic bottles are transformed into PET polyester yarn
- Additionally, 42% of the overall product is post-consumer recycled polyester (PCR)
- Internal padded compartment with space for files and accessories
- Front zippered pocket for quick access to essentials
- Padded shoulder straps and breathable mesh fabric



16" Backpack

K60392WW



14" Backpack

K60391WW



EQ 16" LAPTOP CARRYING CASE

- 23.0 x 250ml plastic bottles were transformed into PET polyester yarn
- Additionally, 52% of the overall product is post-consumer recycled (PCR) polyester
- TSA-friendly clamshell laptop compartment with trolley strap
- Internal padded compartment with space for files and accessories
- Front zippered pocket for quick access to essentials
- Padded shoulder straps



K60390WW



EQ LAPTOP SLEEVES

- At least 7.2 x 250ml plastic bottles were transformed into PET polyester yarn
- Additionally, at least 55% of the overall product is post-consumer recycled (PCR) polyester
- Simple and modern design
- Padded compartment protects laptop or tablet
- Front zippered pocket for quick access to essentials (12" and 14" sleeves)



16" Sleeve

K60395WW



14" Sleeve

K60394WW



12" Sleeve

K60393WW

ea post-consumer recycled

EQ Docking Stations

Our new range of USB docking stations utilise post-consumer recycled material, helping to reduce the impact of plastic on the global environment.



SD500T5 EQ THUNDERBOLT™ 5 TRIPLE 4K DOCKING STATION

- The aluminium in this product contains 100% post-consumer recycled (PCR) content*
- Supports Thunderbolt 5, Thunderbolt 4, USB4 & USB-C® laptops
- Triple 4K video @ 144Hz or dual 8K video @ 60Hz
- 3 x TB5, 3 x USB-A, Combo Audio In/Out, SD/Micro SD card readers and 2.5Gbps Ethernet ports
- 80Gbps data transfer speeds with 120Gbps Bandwidth Boost
- Up to 120Gbps bandwidth boost for video-intensive tasks
- 140W Power Delivery for compatible laptops
- Windows and macOS OS compatible

* The outer casing of the docking station is made of aluminium, excluding the PCBA and any related inner components

K35201EU



SD4781P EQ USB-C® & USB-A DUAL 4K DOCKING STATION

- The plastic in this product contains 53.3% post-consumer recycled (PCR) content*
- Supports USB-C® and legacy USB-A laptops
- Dual 4K video via HDMI® 2.0 and DP++ 1.2
- Enables dual monitor support for M1/M2/M3 MacBooks
- 100W Power Delivery for compatible laptops
- Secure screw lock keeps USB-C® host cable in place
- Windows, macOS and Chrome OS compatible

* Does not include the cable, power supply or power cords

K33603EU



SD4842P EQ USB-C® TRIPLE VIDEO DRIVERLESS DOCKING STATION

- The plastic in this product contains 73% post-consumer recycled (PCR) content*
- Supports up to 3 x 1080p monitors @ 120Hz via 2 x HDMI® and 1 x DP 1.4 ports
- 100W Power Delivery for compatible laptops
- Hard-wired USB-C® host cable
- 2 x USB-C® and 3 x USB-A ports
- Windows compatible

* Does not include the cable, power supply or power cords

K32810EU

Security from the Inventors of the Laptop Lock

With a combination of precision engineering, quality materials and device compatibility, Kensington is proud to be a market leader in security solutions.



SLIM NANOSAVER® 2.0 EQ KEYED LAPTOP LOCK

- Lock contains only 7.5g of plastic versus 36g in prior generation, equalling a 78% reduction in plastic*
- Secures devices using the Kensington Nano Security Slot
- Slim lockhead won't block ports

* Plastic removed from cable jacket, crimp cover, ferrule cover and key cover



K60630WW

3-IN-1 COMBINATION LAPTOP LOCK

- Secures devices using either the Standard Kensington Security Slot™ (T-Bar™), Wedge-Shaped or Nano Security Slot™
- Supplied with three interchangeable lock tips with storage case
- 4-wheel number code with up to 10,000 possible combinations



K62316WW

NANOSAVER® KEYED LAPTOP LOCK

- Secures new HP, Lenovo and Asus devices using the Kensington Nano Security Slot
- Patented Hidden Pin technology makes locks more secure by reducing the risk of tampering



K64444WW

SLIM NANOSAVER® COMBINATION LOCK

- Slim lockhead allows ultra-thin laptops to lie flat and won't block ports
- Secures new HP, Lenovo and Asus devices using the Kensington Nano Security Slot
- Resettable four-wheel number code with 10,000 possible combinations



K60603WW

SLIM N17 2.0 KEYED LAPTOP LOCK FOR WEDGE-SHAPED SLOTS

- Tested and approved by Dell
- Slim lockhead will not obstruct ports
- Allows ultra-thin laptops to lie flat and stable
- Secures Dell and other devices using the Wedge-Shaped security slot



K64440WW

N17 COMBINATION LOCK FOR WEDGE-SHAPED SLOTS

- Tough lock head that fits seamlessly into the latest Dell laptops and tablets with a wedge-shaped lock slot
- Resettable 4-wheel number code with 10,000 possible combinations, selectable by the user



K68008EU

MICROSAVER® 2.0 KEYED LAPTOP LOCK

- Low profile (10mm) lock head with pivot and rotate for easy engagement
- T-Bar™ locking technology secures devices with the standard Kensington Security Slot™
- Pivot and rotate cable head featuring one-handed operation allows for easy and flexible connection and movement



K65020EU

SLIM COMBINATION LAPTOP LOCK

- Slim profile allows ultra-thin devices to lie flat and remain stable
- T-Bar™ locking technology secures devices with the standard Kensington Security Slot™
- Resettable 4-wheel number code offers 10,000 possible combinations



K60600WW